

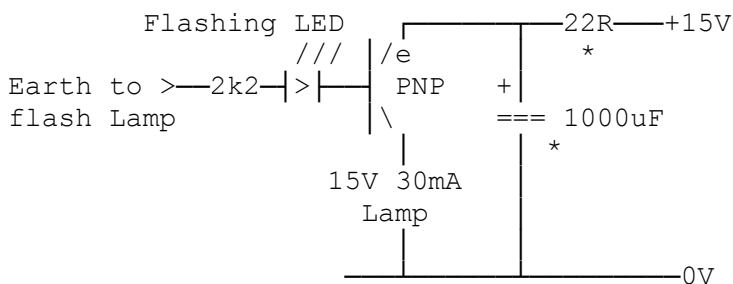
Flashing LED lamp driver

By G8MNY

(New Jan 14)

(8 Bit ASCII graphics use code page 437 or 850, Terminal Font)

Here is a small circuit I used to flash an existing panel lamp on a broadcast mixing desk.



* Optional components to remove pulses from supply rail

HOW IT WORKS

The flashing LED draws only small current until it lights. When on the PNP is driven hard to give power to the panel lamp.

This a much simpler solution than an Astable/555 timer/Pic etc.

See Tech bul "Towing & Reversing Beeper"

Why Don't U send an interesting bul?

73 De John, G8MNY @ GB7CIP