

PTT line for Drake L-4B PA

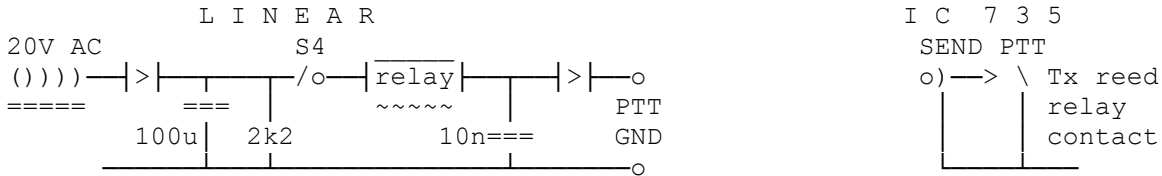
By G8MNY

(Updated Jul 07)

(8 Bit ASCII Graphics use code page 437 or 850)

THE PROBLEM

If wired directly to a IC735 Tx send connector, the IC735 reed relay contacts weld up with the linear relay's back emf.

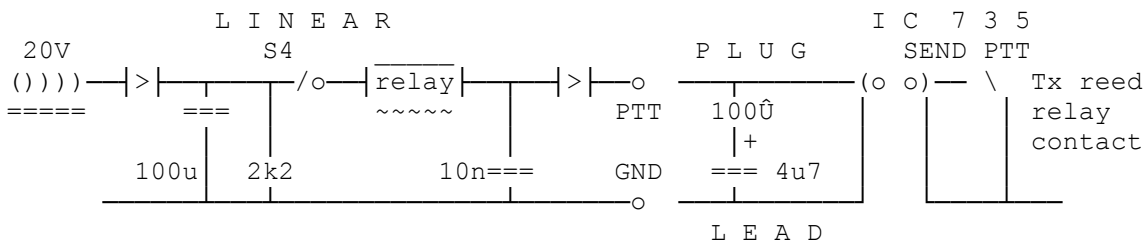


This old large valve HF PA uses an inductive 12V PTT relay that is runs on unregulated 18V.

MY CURE

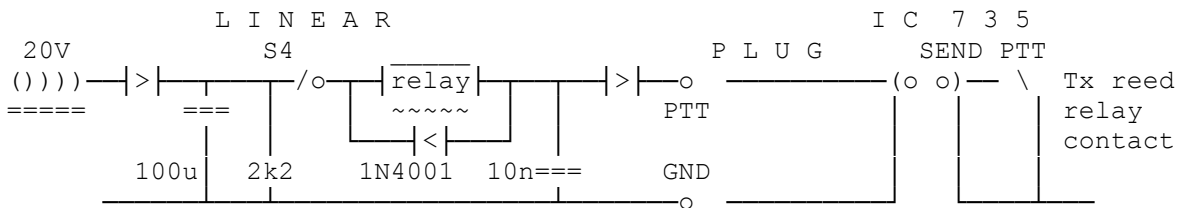
Not wishing to modify either pieces of kit, I chose to find a simple fool proof solution in the inter connecting lead.

To stop the back emf & inrush current to the IC735's reed relay SEND contact, I added a 35V 4u7 in series with a 100uF across linear's PTT 2 pin plug.



The added operate & release delay is not detectable (1mS?), & there is no longer a spark & shocking back emf, if U manually earth the phono plug etc.

Recently overhauled the PA & modified the PTT relay with the usual diode across it, to stop all relay back emf.



Why Don't U send an interesting bul?

73 de John, G8MNY @ GB7CIP