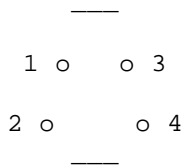


BY G8MNY

S-Video pin-out connections
for the 4 pin miniature din out socket

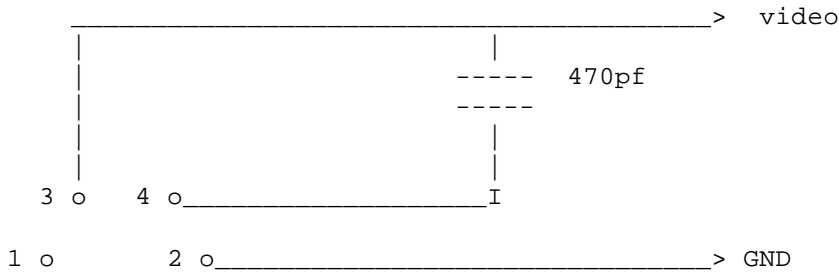


- 1 - Luminance signal
- 2 - Luminance ground
- 3 - Chromanance signal
- 4 - Chromanance ground

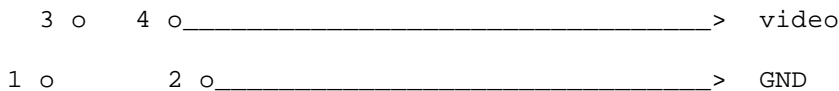
For S Video the normal "Composite" video signal that contains.. frame & line "Syncs" + the black & white "Luminance" Video + the "Chromanance" colour signal, is split into 2 components:- Luminance & sync, and a Chromance.

The purpose of having 2 separated signals is to negate the need for filtering which always comes with some definition loss, and to stop cross colour problems caused by sharp edges & gratings in the Luminance Jamming the colour signal.

From: RZ6AVM@UA6ADV.H.KRD.RUS.EU
Title : S-Video TV card -- RCA



OR



- 1. GND-Y 2. GND-C 3. Y 4. C

73 - EVGENY, RZ6AVM @ UA6ADV

Why Don't U send an interesting bul?
/QSL
73 De John, G8MNY @ GB7CIP